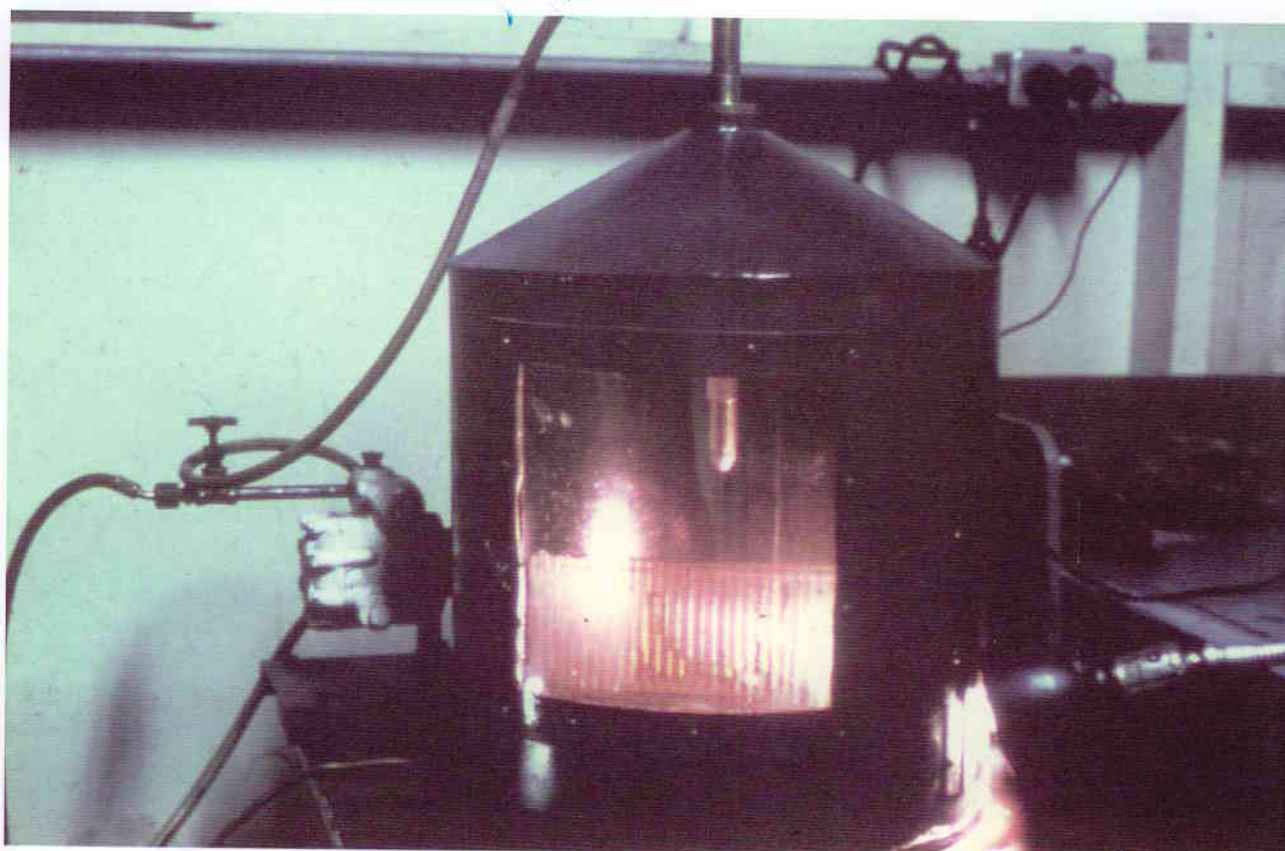


DROPLET ANALYSIS: D:852143.CCD

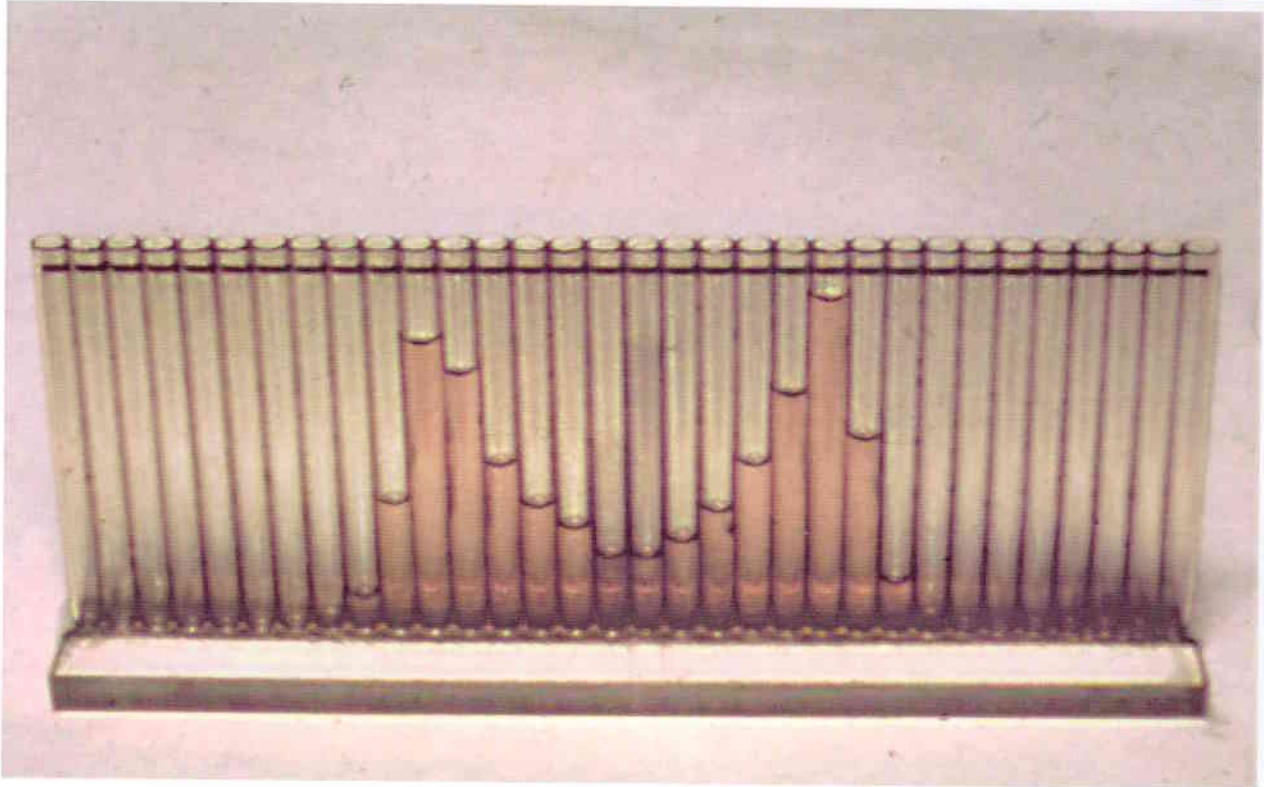
ADJUSTED DATA FOR COMBINED PROBES

SIZE CLASS	SIZE RANGE (MICRONS)			NUMBER PERCENT	NUMBER CUM. %	VOLUME PERCENT	VOLUME CUM. %
	LOWER	UPPER	MIDPOINT				
1	5.0	11.0	8.0	8.48	8.48	0.01	0.01
2	11.0	17.0	14.0	8.23	16.71	0.05	0.06
3	17.0	23.0	20.0	11.56	28.27	0.20	0.26
4	23.0	29.0	26.0	13.39	41.66	0.51	0.76
5	29.0	35.0	32.0	11.48	53.14	0.81	1.58
6	35.0	41.0	38.0	8.33	61.47	0.99	2.56
7	41.0	47.0	44.0	4.68	66.15	0.86	3.42
8	47.0	50.0	48.5	1.11	67.26	0.27	3.70
9	50.0	80.0	65.0	15.74	83.00	9.32	13.01
10	80.0	110.0	95.0	8.01	91.01	14.81	27.82
11	110.0	140.0	125.0	4.41	95.42	18.58	46.40
12	140.0	170.0	155.0	2.86	98.28	22.97	69.38
13	170.0	200.0	185.0	1.20	99.48	16.42	85.80
14	200.0	230.0	215.0	0.34	99.82	7.30	93.10
15	230.0	260.0	245.0	0.12	99.95	3.94	97.04
16	260.0	290.0	275.0	0.02	99.97	1.04	98.08

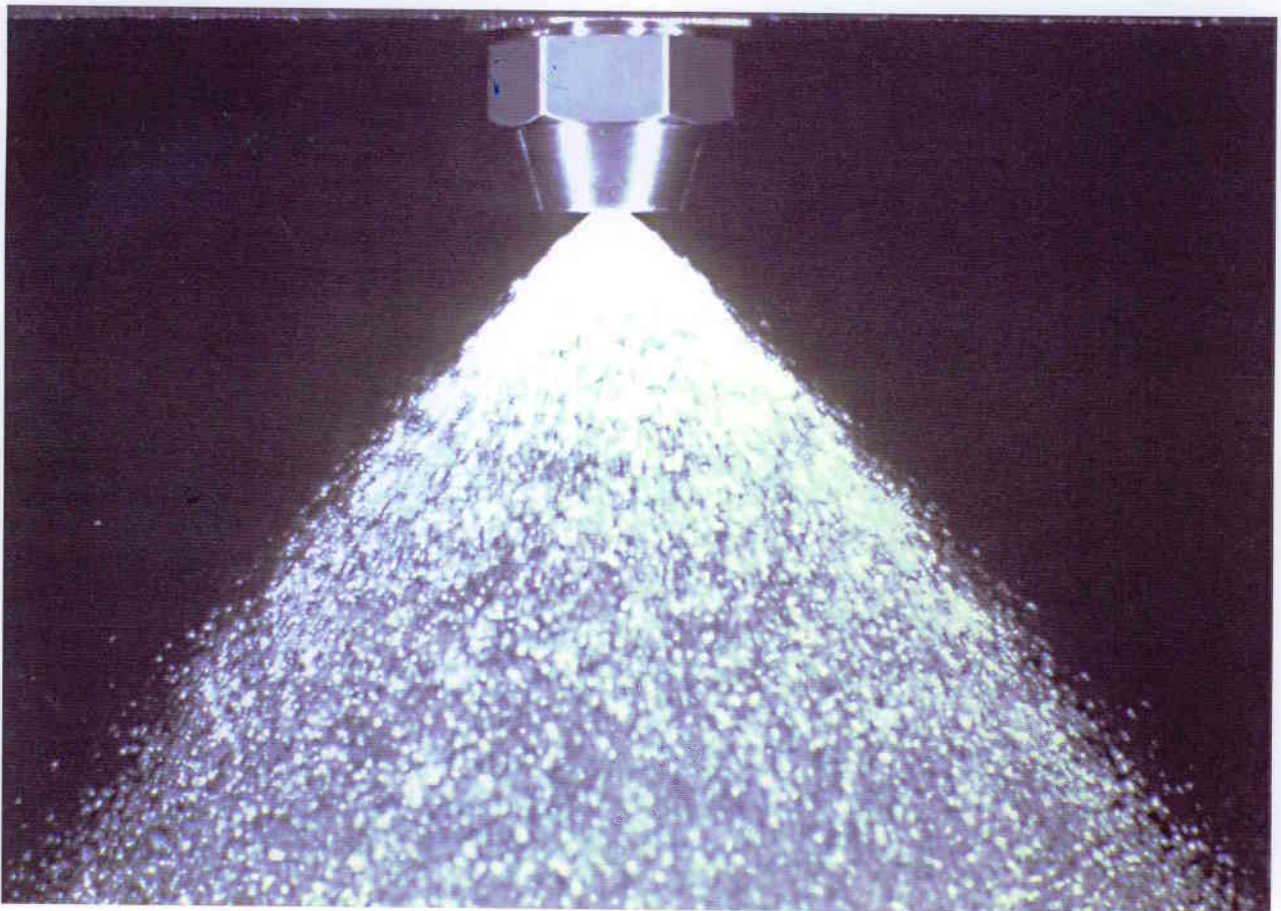
Ergebnis einer Tropfenanalyse einer Öldüse



Ermittlung der Sprühcharakteristik im 'PATTERNATOR'



Verteilung des Öls bei einer Öldüse mit der Sprühcharakteristik 'HOHL'



Sprühbild einer Öldüse bei Öl mit geringer Viskosität (hohe Öltemperatur)